

BL2901 data temporarily unavailable

(BL2901 online module handbook version)

Credits: data temporarily unavailable

Semester: 2

Module Organiser

Dr Iain Matthews

imm7@st-andrews.ac.uk

01334 463004

Pre-requisite Modules:

Anti-requisite Modules:

Post-requisite Modules:

data temporarily unavailable

Additional Module

Information:

[Please check MMS regularly for additional module information](#)

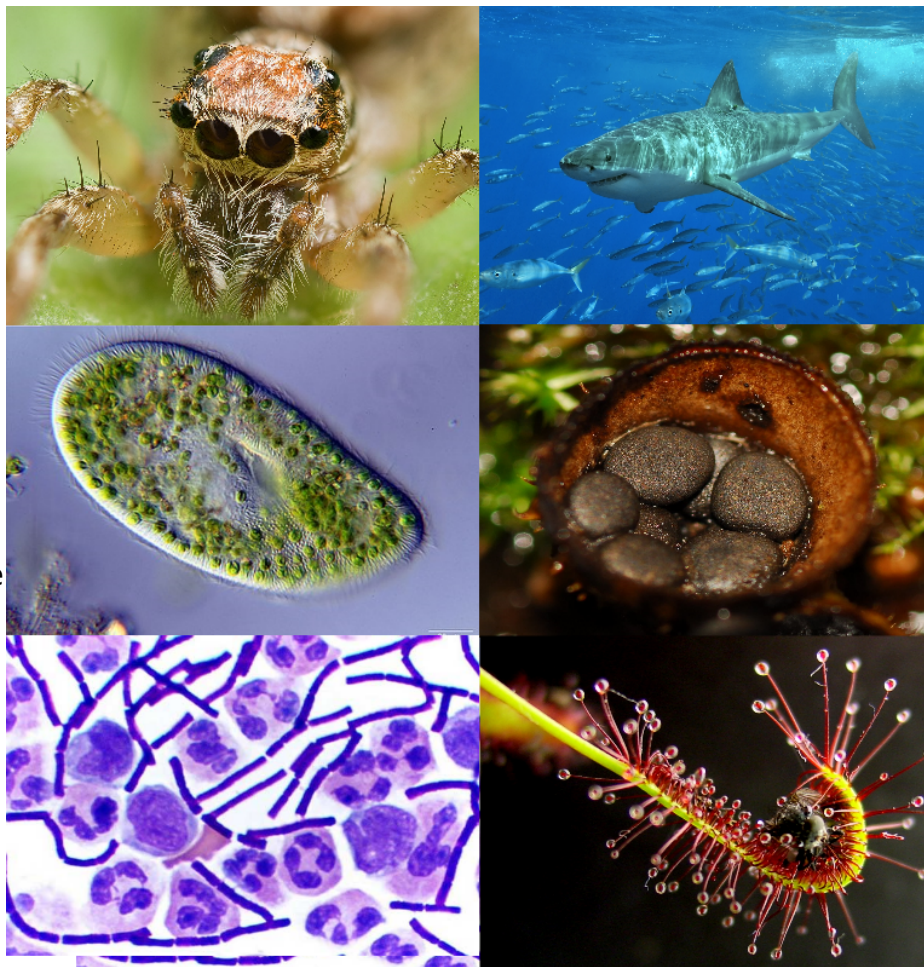


image: The five kingdoms of life.

data temporarily unavailable

[BL2901View content for BL2901 \(2023/4\) in the Module Management System \(MMS\)](#)

[View the current Biology Online Module Catalogue for BL2901](#)

[BL2901View BL2901 \(2023/4\) in the University of St Andrews Module Catalogue](#)

Contents:

- Cover
- Contents
- Timetable
- Reading List
- Assessment
- Who To Ask
- Contributing Staff
- Learning Outcomes
- Acquired Skills
- Policies

BL2901: Timetable

No details are currently available for BL2901 Timetable

BL2901: Reading List

[BL2901Click for BL2901 reading list](#)

BL2901: Assessment

[BL2901View coursework assessment details for BL2901 \(2023/4\) in MMS](#)

The following related information applies to all Biology modules:

School of Biology Marking Criteria:	SeeÂ JH booklet info (st-andrews.ac.uk) Â
Late submission of continuous assessment work:	All late submissions of coursework that do not require electronic submission should be made via the Biology Teaching Office, Level 2, BMS Building, North Haugh.
Exam details:	See School of Biology UG Handbook JH booklet info (st-andrews.ac.uk) Â : All Biology exams will be conducted online for 2022-23.
Exam timetable:	See Timetables - Exams - University of St Andrews (st-andrews.ac.uk) Â
Expected attendance:	SeeÂ JH booklet info (st-andrews.ac.uk) Â for detailed attendance requirements.
Good Academic Practice & Avoiding Academic Misconduct:	SeeÂ JH booklet info (st-andrews.ac.uk)
University Student Handbook:	University Student Handbook
School and University regulations in the School and University Undergraduate Handbook relating to absence reporting, penalties and rules for late submission of work, extensions for coursework, return of coursework, S-coding, good academic practice and Academic Alerts.:	JH booklet info (st-andrews.ac.uk) University Student Handbook

Who to ask

(Information in this section applies to all Biology Modules)

Before contacting staff, students should check the content of the Biology Undergraduate Handbook, the module handbook and specific task instructions.

Questions about

General teaching matters
Rescheduled or cancelled events
Lecture or practical content
Completing assessed practical assignments
Completing assessments
Marking on continuous assessment
Marking on exams
Rearranging practical days
Absence and/or extensions
Difficulties with academic progress which impact more than one module:

Overall performance, progress or future directions:
Disability:
For advice and support on any issue e.g. academic, financial, international, personal or health matters, or if you are unsure of who to go to for help:

University assistance with urgent matters out of office hours:

Contact

Biology Teaching Office (bioteach@st-andrews.ac.uk)
Check your University email
The lecturer who presented the material
The lecturer who set the assignment
Module Organiser (Dr Iain Matthews imm7@st-andrews.ac.uk)
The Demonstrator or Module Organiser (Dr Iain Matthews imm7@st-andrews.ac.uk)
Module Organiser (Dr Iain Matthews imm7@st-andrews.ac.uk)
Module Organiser (Dr Iain Matthews imm7@st-andrews.ac.uk)
Module Organiser (Dr Iain Matthews imm7@st-andrews.ac.uk) and the Biology Teaching Office (bioteach@st-andrews.ac.uk)
Year Coordinator
See School of Biology UG Handbook for list: [JH booklet info \(st-andrews.ac.uk\)](http://www.st-andrews.ac.uk/jh-booklet-info)
Advisor of Studies

Disability Coordinator (biodisabilities@st-andrews.ac.uk)
Advice & Support Centre
Address: 79 North Street, St Andrews
Email: theasc@st-andrews.ac.uk
Web: <https://www.standrews.ac.uk/ask-a-question/>
Tel: 01334 462020
Tel: 01334 476161
Web: <https://www.st-andrews.ac.uk/students/advice/counselling/incrisis/>

Biology Teaching Office:

We are happy to hear from you about teaching matters. The School of Biology Teaching Office is open Monday to Friday 09.00 - 13.00 and 14.00 - 17.00. School of Biology staff will respond to your emails during these hours. Our team will provide a response to you within three working days.

Biology Teaching Office (Level 2), University of St Andrews, Biomolecular Sciences Building, North Haugh, St Andrews, Fife KY16 9ST

Email: bioteach@st-andrews.ac.uk

Tel: 01334 46 3602 or 3566

BL2901: Contributing Staff

[Dr Iain Matthews](#)
(Module Organiser)

Senior Teaching Fellow & Pro-Dean
for the Faculty of Science

imm7@st-andrews.ac.uk

[Dr Iain Matthews](#)
(Module Organiser)

Senior Teaching Fellow & Pro-Dean
for the Faculty of Science

imm7@st-andrews.ac.uk

BL2901: Learning Outcomes

Students completing module BL2901 successfully should be able to:

- Understand the classification and evolution of the major groups of Life
- Understand the key traits of the species contained in the Kingdom Monera
- Understand the key traits of the species contained in the Kingdom Protista
- Understand the key traits of the species contained in the Kingdom Fungi
- Understand the key traits of the species contained in the Kingdom Plantae
- Understand the key traits of the species contained in the Kingdom Animalia
- Have a general understanding of animal behaviour
- Have a general understanding of animal mating and competition
- Have a general understanding of the current state of Biodiversity
- Carry out basic laboratory procedures
- Use a microscope to examine biological samples
- Search and reference the scientific literature
- Write a scientific essay

BL2901: Acquired Skills

Practical Skills

- Biological drawing and photography
- Compound Microscopy
- Fixing and preserving specimens
- Handling microbes
- Measuring structures using microscopes
- Purpose and practice of dissection
- Species identification (Botany)
- Stereomicroscopy
- Using dichotomous keys

Transferable Skills

- Group discussion - participating
- "Short" practical write-up (e.g. completed worksheet)
- Short essay (1000-2000 words)
- Critically evaluating sources/information
- Finding information from museums
- Finding information on the web
- Finding literature
- Referencing
- Sourcing figures/tables
- Ethical considerations
- Generating questions
- Lab safety awareness
- Working in pairs/small groups

Policies

(Information in this section applies to all Biology Modules)

- The procedures and regulations followed by the School of Biology are outlined in the [University Handbook](#) and in the School of Biology UG handbook [JH booklet info \(st-andrews.ac.uk\)](#)
- All coursework associated with the module must be completed and submitted by its due date.
- Specific School regulations relating to absence reporting, penalties and rules for late submission of work, extensions for coursework, return of coursework, S-coding, Good Academic Practice and Academic Alert are stated in the School of Biology UG handbook [JH booklet info \(st-andrews.ac.uk\)](#) and students are required to carefully read these regulations.
- Students are also referred to the University Handbook, available at: <http://www.st-andrews.ac.uk/studenthandbook/>